

3A87HF0S10020

02

conditions: (1) This device may not cause harmful interference, and (2) this device must accept any interference received, including interference that may cause undesired operation.

FOR MOBILE DEVICE USAGE (>20cm / low power eg. AP routers)

Radiation Exposure Statement:

This equipment complies with FCC radiation exposure limits set forth for an uncontrolled environment. This equipment should be installed and operated with minimum distance 20cm between the radiator & your body.

To comply with the FCC RF exposure compliance requirements, the antenna(s) used for this transmitter must be installed to provide a separation distance of at least 20cm (8 inches) from all persons and must not be collocated or operating in conjunction with any other antenna or transmitter. No change to the antenna or the device is permitted. Any change to the antenna or the device could result in the device exceeding the RF exposure requirements and void user's authority to operate the device.

The equipment has been tested and found to comply with the limits for a Class B Digital Device, pursuant to part 15 of the FCC Rules. These limits are designed to provide reasonable protection against harmful interference in a residential installation. This equipment generates, uses and can radiate radio frequency energy and, if not installed and used in accordance with the instruction, may cause harmful interference to radio communication. However, there is no guaranty that interference will not occur in a particular installation. If this equipment does cause harmful interference to radio or television reception, which can be determined by turning the equipment off and on, the user is encouraged to try to correct the interference by one or more of the following measures:

- Reorient or relocate the receiving antenna.
- Increase the separation between the equipment and receiver.
- Connect the equipment into an outlet on a circuit different from that to which the receiver is connected.
- Consult the dealer or an experienced radio / TV technician for help.

FCC Caution: Any changes or modifications not expressly approved by the party responsible for compliance could void the user's authority to operate this equipment.

This transmitter must not be co-located or operating in conjunction with any other antenna or transmitter.

VERY IMPORTANT PLEASE READ

Sangean suggest that you keep your AC Adapter at least 12 inches away from the radio while listening to the AM Band.

Your Sangean Radio is powered by an AC adapter which is a "switching" or "switch-mode" type. The DOE (Department Of Energy) has a Federal mandate; requiring all manufactures to use this type of power supply. This newer power saving technology has the unfortunate side effect of causing interference to the AM radio band.

Therefore, we recommend that customers keep at least a 1 foot distance between the AC adapter and the radio. This interference will not affect the FM Band. If you have any questions please contact customer service at (888)726-4326, (562)941-9900 or service@sangean.com

If an AC adapter isn't included in this model and if you wish to purchase an AC Adapter separately, please refer to the specifications for the AC Adapter stated on the final page of the manual, or please contact Sangean for the correct AC Adapter and specifications.

To learn more about the DOE mandate please visit http://www1.eere.energy.gov/buildings/appliance_standards/product.aspx/productid/23

Please note not all AC adapters are alike.

The AC adapter that is included with this radio is designed to be used exclusively with this device. Do not use an AC adapter that differs from the specifications on the AC adapter that is included.

If an AC adapter is NOT included with your radio and in order not to damage the unit and void your warranty, specifications for the AC Adapter are stated on the final page of the manual, or please contact Sangean for the correct AC Adapter and specifications. For customers in the US and Canada, please call 562-941-9900 or 888-726-4326. For all other areas, please contact us via contact@sangean.com.

Do not use an AC adapter that does not meet the correct specifications.

Powering the radio

AC operation (Fig. 1)

The WR-60 can be powered using the supplied AC power adapter. Before connecting the AC power adapter to a wall socket, please ensure that the voltage that the socket supplies is within the supported range (100~240 Vac, 50/60 Hz).

If the wall socket does supply a voltage that is within the supported range, first connect the small plug of the power cord to the DC IN socket on the back of the radio and then connect the AC power

GB

For full documentation on all of the WR-60's functionality, please visit the website below or scan the QR code to download the full manual.

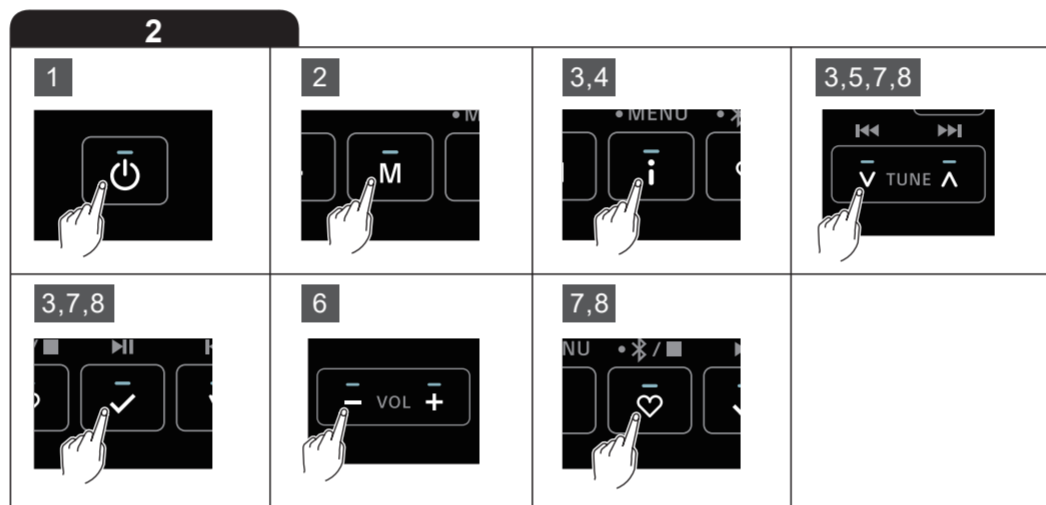
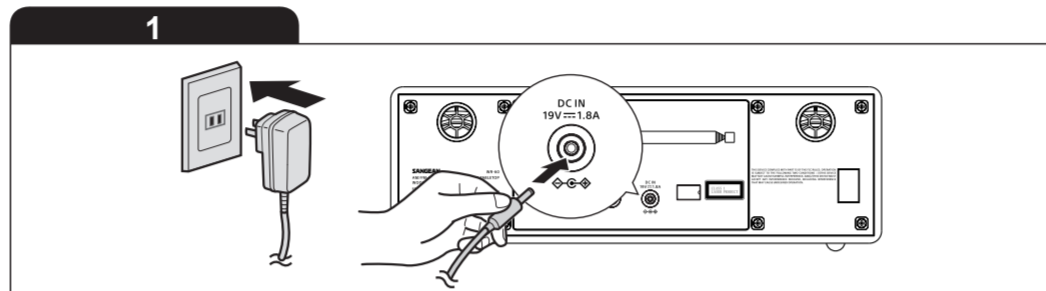
F

Pour obtenir une documentation complète sur toutes les fonctionnalités du WR-60, veuillez visiter le site Web ci-dessous ou scanner le code QR pour télécharger le manuel complet.

E

Para obtener una documentación completa sobre todas las funciones de la WR-60, visite el sitio web a continuación o escanee el código QR para descargar el manual completo.

<https://www.sangean.com>



03

adapter to the wall socket.

Listening to the radio (Fig. 2)

1. Press the **Power button** to turn on the radio.
2. Repeatedly press the **Mode button** to select the desired operating mode.
3. Press and hold the **Info / Menu button** for 2 seconds to access the menu of each mode. Use the **Tuning Up / Down button** and the **Select button** to navigate the menu and configure settings. Press the **Info / Menu button** to exit the menu.
4. The **Info button** displays information about the currently playing radio station or music file. Press the **Info button** to cycle through the different options.
5. In the AM or FM mode, press the **Tuning Up**

6. Press the **Volume Up / Down button** to adjust the sound level as needed.
7. **Storing a preset:** To store the currently playing radio station as a preset, press and hold the **Preset button** for 2 seconds to open the **Preset Store** menu and then select the desired preset number using the **Tuning Up / Down button** and **Select button**.
8. **Recalling a preset:** Press the **Preset button** to open the **Preset Recall** menu and then select the desired preset number using the **Tuning Up / Down button** and **Select button**.

Specifications

Power Requirement	
Mains power supply	AC 100~240 V 50/60 Hz, DC 19V / 1.8A Center Pin Positive (AC / DC switching adapter)
Battery (Remote control)	2 x AAA
Frequency Coverage	
FM	87.5-108 MHz
AM	520-1710 kHz (10kHz / step) 522-1710 kHz (9kHz / step)
Bluetooth	
Bluetooth version	5.2
Supported Bluetooth profiles	A2DP, AVRCP
Supported Bluetooth codecs	SBC
Transmitting Power	Power Class 2
Bluetooth range	approx. 10m (30 feet)
Circuit Features	
Output power	2 x 5 watts
Headphone socket	3.5mm diameter
Auxiliary in socket	3.5mm diameter
Antenna System	FM telescopic antenna AM built-in ferrite antenna
Operating Temperature Range	
	0°C to +35°C

Sangean reserves the right to amend the specifications without notice.

RECYCLING This product bears the selective sorting symbol for Waste electrical and electronic equipment (WEEE). This means that this product must be handled pursuant to European directive 2012/19/EU in order to be recycled or dismantled to minimize its impact on the environment.

01

Quick Start Guide

Important safety instructions

1. Read these instructions.
2. Keep these instructions.
3. Heed all warnings.
4. Follow all instructions.
5. Do not use this apparatus near water.
6. Clean only with dry cloth.
7. Do not block any ventilation openings. Install in accordance with the manufacturer's instructions.
8. Do not install near any heat sources such as radiators, heat registers, stoves, or other apparatus (including amplifiers) that produce heat.
9. Do not defeat the safety purpose of the polarized or grounding-type plug. A polarized plug has two blades with one wider than the other. A grounding type plug has two blades and a third grounding prong. The wide blade or the third prong are provided for your safety. If the provided plug does not fit into your outlet. Consult an electrician for replacement of the obsolete outlet.
10. Protect the power cord from being walked on or pinched particularly at plugs, convenience receptacles, and the point where they exit from the apparatus.
11. Only use attachments / accessories specified by the manufacturer.
12. Use only with the cart, stand, tripod, bracket, or table specified by the manufacturer, or sold with the apparatus. When a cart is used, use caution when moving the cart / apparatus combination to avoid injury from tip-over.
13. Unplug this apparatus during lightning storms or when unused for long periods of time.
14. Refer all servicing to qualified service personnel. Servicing is required when the apparatus has been damaged in any way, such as power-supply cord or plug is damaged, liquid has been spilled or objects have fallen into the apparatus, the apparatus has been exposed to rain or moisture, does not operate normally, or has been dropped.
15. To Reduce the Risk of Fire or Electric Shock, Do not Expose This Appliance To Rain or Moisture.
16. The Shock Hazard Marking and Associated

Graphical Symbol is provided on the rear of unit.

17. Apparatus shall not be exposed to dripping or splashing and no objects filled with liquids, shall be placed on the apparatus.
18. Excessive sound pressure on ear-and headphones could impair the hearing ability. Higher setting that idle on the equalizer leads to higher signal voltages on the output for ear and headphones.
19. The power plug should be close to the radio, and easy to be approached that during the emergency, to disconnect the power from the radio, just unplug the power plug from the AC power slot.
20. Where the MAINS plug or an appliance coupler is used as the disconnect device, the disconnected device shall remain readily operable.
21. The batteries shall not be exposed to excessive heat such as sunshine, fire or the like.
22. Replacement of a battery with an incorrect type that can defeat a safeguard (for example, in the case of some lithium battery types).
23. Disposal of a battery into fire or a hot oven, or mechanically crushing or cutting of a battery, that can result in an explosion.
24. Leaving a battery in an extremely high temperature surrounding environment that can result in an explosion or the leakage of flammable liquid or gas.
25. A battery subjected to extremely low air pressure that may result in an explosion or the leakage of flammable liquid or gas.
26.

	The symbol indicates AC Voltage.
	The symbol indicates DC Voltage.
	The symbol indicates class II equipment.
	Use only power supplies listed in the user instructions.

CAUTION:

To reduce the risk of the electric shock, do not perform any servicing other than that contained in the operating instructions unless you are qualified to do so.

For United States:

FC Cautions to the user

This device complies with Part 15 of the FCC Rules.

Operation is subject to the following two

04

Guide de démarrage rapide

Instructions importantes concernant la sécurité

1. Lisez ces instructions.
2. Conservez ces instructions.
3. Tenez compte de toutes les mises en garde.
4. Suivez toutes les instructions.
5. N'utilisez pas cet appareil à proximité de l'eau.
6. Ne nettoyez qu'à l'aide d'un linge sec.
7. N'obstruez aucune voie de ventilation. Installez conformément aux instructions du fabricant.
8. N'installez pas à proximité de sources de chaleur telles que radiateurs, registre de chaleur, poêle ou autres appareils (y compris les amplificateurs) qui produisent de la chaleur.
9. Ne sous-estimez pas l'objectif de sécurité des prise polarisées ou de type terre. Une prise polarisée a deux fiches dont l'une est plus large que l'autre. Une prise de type terre a deux fiches plus une fiche supplémentaire de raccord à la terre. La fiche large ou le raccord à la terre sont conçus pour votre sécurité. Si la prise fournie ne convient pas à votre équipement, consultez un électricien pour remplacer votre ancien équipement. Consultez un électricien pour le remplacement de l'installation obsolète.
10. Protégez le cordon d'alimentation contre les piétinements ou les pincements, particulièrement au niveau des branchements, prises de courant, et du point d'où il sort de l'appareil.
11. N'utilisez que les extensions / accessoires spécifiques par le fabricant.
12. N'utilisez qu'avec un chariot, support, trépied, crochet ou table spécifié par le fabricant, ou vendu avec l'appareil. Lorsque vous utilisez un chariot, soyez attentif lorsque vous déplacez la combinaison chariot / appareil pour éviter les blessures dues au renversement.
13. Débranchez cet appareil lors des orages ou lorsqu'il est inutilisé pendant une longue période.
14. Confiez toute réparation à du personnel de maintenance qualifié. La réparation est nécessaire lorsque l'appareil a été endommagé de quelque sorte, par exemple si le cordon d'alimentation ou la prise sont endommagés, si du liquide a été répandu ou si des objets sont tombés dans l'appareil ou si ce dernier a été exposé aux moisissures ou à la pluie, qu'il ne fonctionne pas normalement ou a chuté.
15. Pour réduire le risque d'incendie ou de choc électrique, n'exposez pas cet appareil à la pluie

ou l'humidité.

16. Le marquage de risque d'étouffement et les symboles graphiques associés sont présents sur la face arrière de l'unité.
17. L'appareil ne doit pas être exposé aux écoulements ou aux éclaboussures et aucun objet rempli de liquide ne doit être placé dessus.
18. Une pression excessive dans les oreilles et les écouteurs peuvent diminuer l'audition. Les réglages hauts qui désactivent le fil des égaliseurs amènent à des tensions de signal fortes sur la sortie pour les oreilles et les écouteurs.
19. La prise d'alimentation doit être proche de la radio, et facilement accessible afin de n'avoir qu'à débrancher la prise du secteur pour pouvoir déconnecter l'appareil en cas d'urgence.
20. Lorsque l'alimentation principale ou un appareil de raccordement sert de sectionneur, le sectionneur doit toujours rester en état de marche.
21. Les piles ne doivent pas être exposées à des chaleurs excessives telles que la lumière du soleil, le feu ou autres.
22. Remplacement d'une batterie par un type incorrect qui peut annuler une protection (par exemple, dans le cas de certains types de batteries au lithium).
23. L'élimination d'une batterie dans le feu ou dans un four chaud, ou l'écrasement ou le découpage mécanique d'une batterie, pouvant entraîner une explosion.
24. Laisser une batterie dans un environnement à température extrêmement élevée pouvant entraîner une explosion ou une fuite de liquide ou de gaz inflammable.
25. Une batterie soumise à une pression d'air extrêmement faible pouvant entraîner une explosion ou une fuite de liquide ou de gaz inflammable.
26.

	Le symbole indique une tension alternative.
	Le symbole indique une tension continue.
	Le symbole indique un équipement de classe II.
	Utilisez uniquement les blocs d'alimentation répertoriés dans le mode d'emploi.

PRÉCAUTION:

Pour réduire le risque de choc électrique, ne procédez à aucune réparation autre que celles détaillées dans ces instructions d'utilisation à moins que vous ne disposiez des qualifications.

